

STANDARD PROGRAM

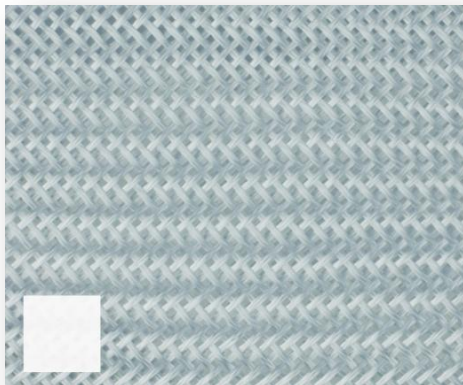
GLASS FIBRE BRAIDS



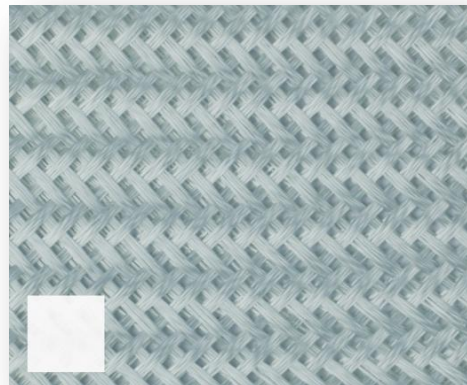
Glass Fiber Braids

The tubular glass fiber braids program is made of A-grade E-glass yarns.

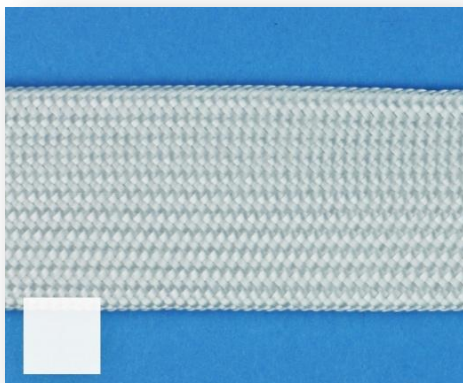
To cover a whole range of thicknesses, the program is made of a light, medium and heavy construction. Each range will have a specific range areal weights.



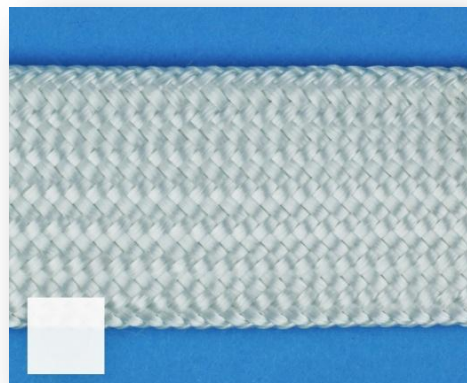
GL 050-046



GL-100-112



GM-020-041 6



GM-025-076

STANDARD PROGRAM

GLASS FIBRE BRAIDS

Glass fiber braids

Light Weight (± 300 gram/m²)

Article	Diameter at $\pm 45^\circ$ in mm	Weight per meter (g/m)	Fabric weight g/m ²	Thickness at 50% FV mm	Yield m/kg at $\pm 45^\circ$
GL 005-005	5	5	293	0,23	217
GL 010-009	10	9	293	0,23	109
GL 015-015	15	15	318	0,25	67
GL 020-018	20	18	287	0,22	56
GL 025-023	25	23	292	0,23	44
GL 030-028	30	28	297	0,24	36
GL 040-036	40	36	287	0,22	28
GL 050-046 	50	46	293	0,23	22
GL 060-056	60	56	297	0,24	18
GL 070-072	70	72	327	0,26	14
GL 080-084	80	84	334	0,27	12
GL 090-084	90	84	297	0,24	12
GL 100-112 	100	112	356	0,29	9,3

Middle Weight (± 650 gram/m²)



Article	Diameter at $\pm 45^\circ$	Weight per m at $\pm 45^\circ$ (g/m)	Fabric weight g/m ²	Thickness at 50% FV mm	Yield m/kg at $\pm 45^\circ$
GM010-020	10 mm	20	640	0,51	50
GM015-034	15 mm	34	720	0,58	29
GM020-041 	20 mm	41	653	0,52	24
GM025-051	25 mm	51	650	0,52	20
GM030-068	30 mm	68	720	0,58	14,7
GM040-081	40 mm	81	645	0,52	12,3
GM050-102	50 mm	102	650	0,52	9,8
GM060-122	60 mm	122	648	0,52	8,2
GM070-152	70 mm	152	692	0,55	6,6
GM080-152	80 mm	152	607	0,49	6,6
GM090-183	90 mm	183	648	0,52	5,5
GM100-203	100 mm	203	647	0,52	4,9
GM125-244 	125 mm	244	622	0,50	4,1

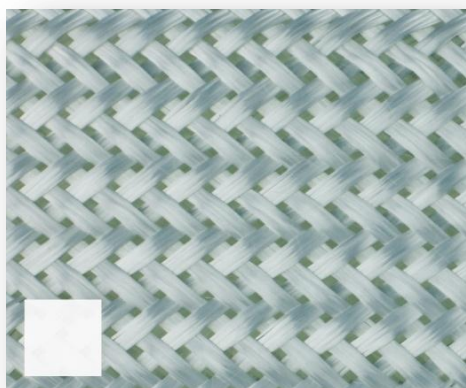
STANDARD PROGRAM

GLASS FIBRE BRAIDS

Glass fiber braids

Heavy Weight (± 1000 gram/m²)

Article	Diameter at $\pm 45^\circ$ in mm	Weight per m at $\pm 45^\circ$ (g/m)	Fabric weight g/m ²	Thickness at 50% FV mm	Yield m/kg at $\pm 45^\circ$
GH010-031	10	31	987	0,79	32
GH015-046	15	46	977	0,78	22
GH020-061	20	61	971	0,78	16
GH025-076	25	76	968	0,77	13
GH030-102	30	102	1082	0,87	9,8
GH040-127	40	127	1011	0,81	7,9
GH050-152 	50	152	968	0,77	6,6
GH060-203	60	203	1077	0,87	4,9
GH070-236	70	236	1073	0,86	4,2
GH080-244	80	244	971	0,78	4,1
GH090-284	90	284	1005	0,80	3,5
GH100-325	100	325	1035	0,83	3,1
GH125-365	125	365	930	0,74	2,7
GH150-487	150	487	1034	0,83	2,1
GH175-609	175	609	1108	0,89	1,6
GH200-609 	200	609	970	0,78	1,6



GH-050-152



GH-200-609